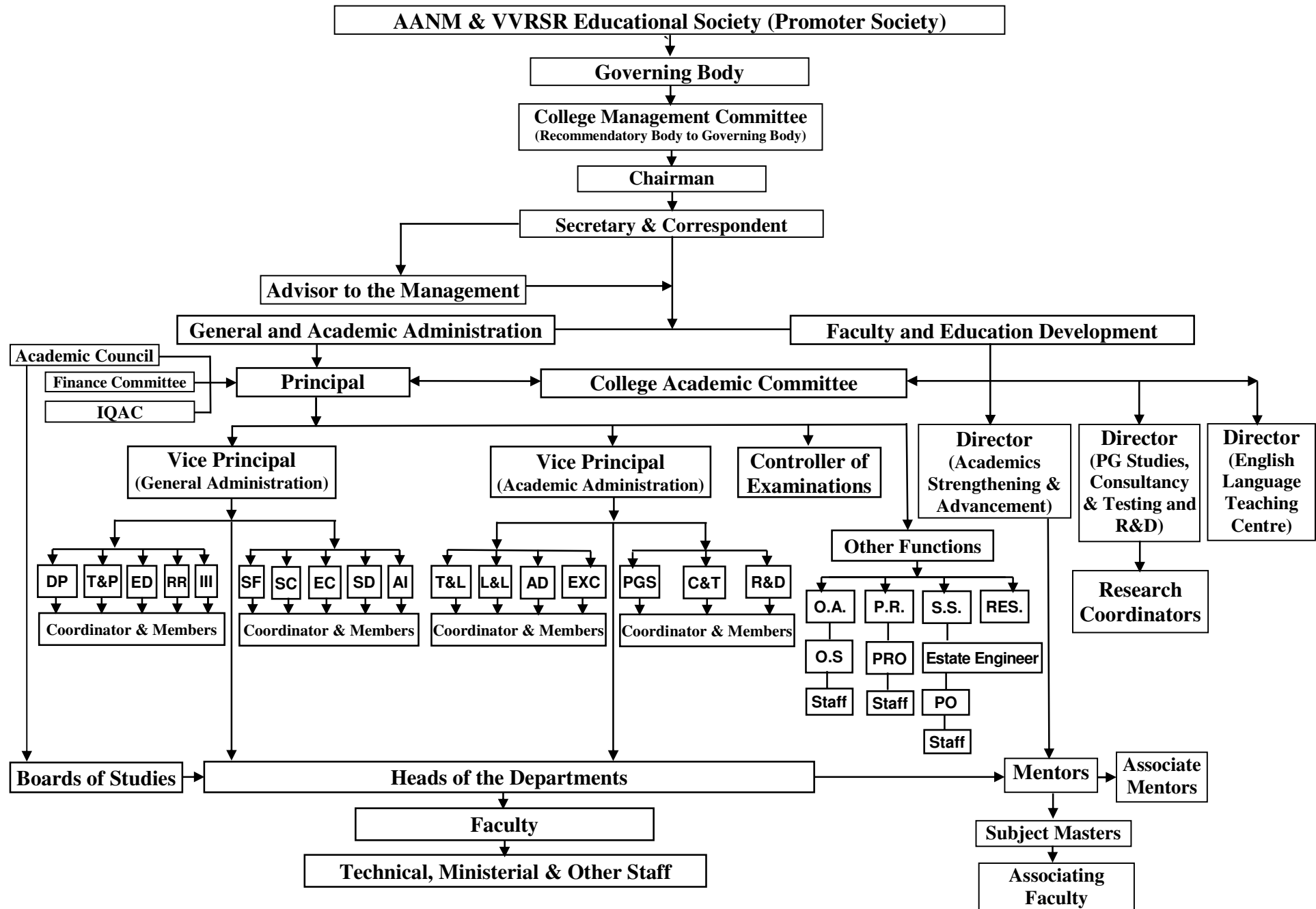


# ORGANIZATION CHART



<b>T&amp;L : Teaching &amp; Learning</b>	<b>III : Industry Institute Interaction</b>	<b>OA : Office Administration</b>
<b>L&amp;L : Labs &amp; Library</b>	<b>SF : Student Facilities</b>	<b>PR : Public Relations</b>
<b>AD : Academic Development</b>	<b>SC : Student Counseling</b>	<b>SS : Support Services</b>
<b>EXC : Examinations Cell</b>	<b>EC : Extra-Curricular Activities</b>	<b>RES : Residential</b>
<b>O&amp;M : Officer &amp; Members</b>	<b>SD : Student Discipline</b>	<b>AO : Administrative Officer</b>
<b>DP : Development Planning</b>	<b>AI : Alumni Information</b>	<b>PRO : Public Relations Officer</b>
<b>T&amp;P : Training &amp; Placement</b>	<b>PGS : PG Studies</b>	<b>TO : Transport Officer</b>
<b>ED : Entrepreneurship Devp.</b>	<b>R&amp;D : Research &amp; Development</b>	<b>OS : Office Superintendent</b>
<b>R : Recruitment</b>	<b>C&amp;T : Consultancy &amp; Testing</b>	<b>Sr.Asst / Jr. Asst : Senior Assistant / Junior Assistant</b>